

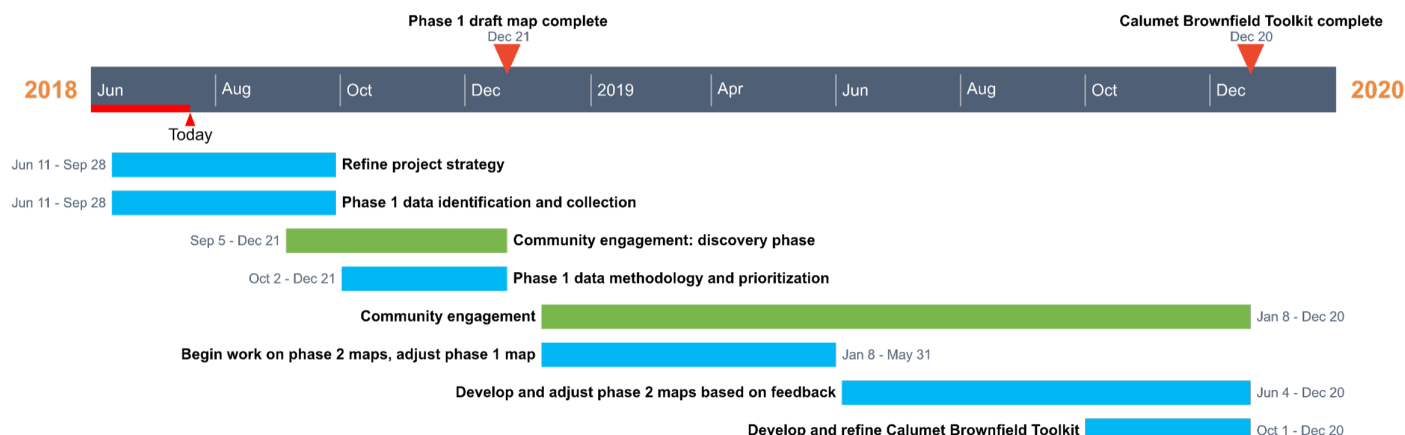
Calumet Brownfield Mapping Project

ABOUT THE PROJECT

The Calumet Collaborative is joining forces with Illinois and Indiana organizations to create a GIS (Geographic Information Systems) map of Brownfields and underutilized land in the Calumet region and their environmental condition. This inventory will help organizations align on bi-state strategies and projects to advance sustainable Brownfield redevelopment in the Calumet. Community needs will also be incorporated into strategies by ensuring community engagement throughout the project.

BROWNFIELD INITIATIVE

This Calumet Brownfield Mapping project supports a larger initiative of the Calumet Collaborative: Brownfield redevelopment. This initiative aims to explore and align Brownfield redevelopment strategies that build off existing resources including: vacant land, brownfields, productive reuse examples, and identify opportunities for action.



PROJECT OUTPUTS

The project output is a Brownfield Redevelopment Toolkit that includes the following resources

- **Calumet Brownfields map (Phase 1):** identifies location and environmental condition of Brownfields
- **Suite of redevelopment maps (Phase 2):** determines best future use of land based on available assets
- **Community engagement report:** identifies leanings and insights from community engagement meetings

CALUMET COLLABORATIVE



Calumet Collaborative is a bi-state non profit focused on advancing the Calumet region through sustainable development in 4 focus areas: economic opportunity, livable communities, culture and heritage, and the environment. The Calumet region covers southeast Chicago, south Cook County and northwest Indiana.

PARTNERS

Metropolitan Water Reclamation District (MWRD)

University of Illinois Chicago (UIC) Voorhees Center

South Suburban Mayors and Managers Association (SSMMA)

Field Museum - Keller Science Action Center

Northwestern Indiana Regional Planning Commission (NIRPC)

Delta Institute

BROWNFIELD WORK GROUP

The Calumet Collaborative convened the following organizations to provide strategic guidance throughout this project

MWRD, UIC, SSMMA, NIRPC, Delta Institute, Chicago Community Trust, Chicago Metropolitan Agency for Planning (CMAP), City of Gary, Northwest Indiana Forum, Neighborhood Housing Services of Chicago, Chicago Neighborhoods Initiative, Metropolitan Planning Council (MPC), Illinois International Port, OAI Inc, Illinois Department of Natural Resources, The Cook County Department of Planning and Development